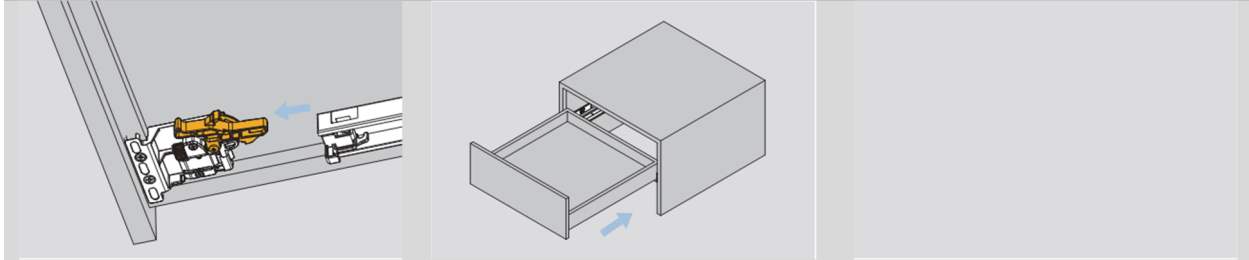


# ASSEMBLY AND ADJUSTMENT

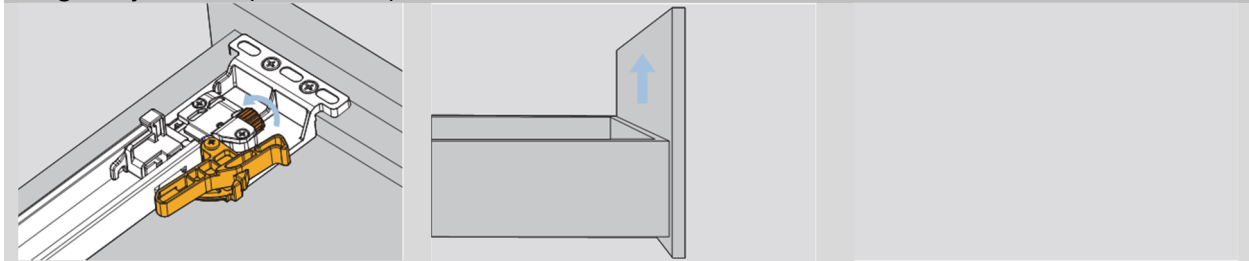
## Assembly and Adjustment (for DTC Full Extension Glide)

### Inserting the drawer



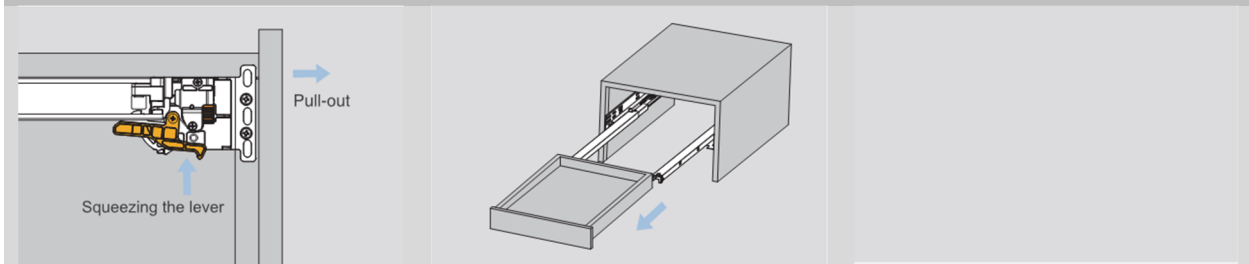
Place the drawer on extended slide and push in until it engages audibly

### Height adjustment (max +3mm)



Rotate the roller on drawer clip to adjust the drawer up or down

### Drawer removal



To remove the drawer, grasp the drawer on each side, squeezing the levers and pulling out and up on drawer

Revision	Date:	Engineer	Project/MPCR	Revision Description:
New	03-28-19	MEZ	TI-3708	New Specification